

December 2017
January 2018



MERRY
CHRISTMAS

Village Contacts

Ambulance, Fire, Police

999

Non-emergency Police

101

Rural Community Warden

07811 271299

Hannah Osborne

Gas Emergency

0800 111999

Highways Fault Reporting

03000 418181

Doctors Surgery

619790/ 611608

Emergency out of hours:

111

Parish Council

www.eastrypc.co.uk

www.facebook.com/EastryPC

Chairman: Nick Kenton

Vice-Chairman: Annie Wiles

Police Community Support

Telephone 101

PCSO Emma Carmichael 58778

Emma.carmichael@kent.pnn.police.uk

Neighbourhood Watch

611580 Sheila Smith

UK Power Network

105

C of E Primary School

611360

Head Teacher: Tim Halling

PTA Chairperson: Miss Laura Lewis

Clerk to Council

614320 Sarah Wells

(clerk@eastrypc.co.uk)

3 Gore Terrace, Gore Road

Eastry, CT13 0LS

Village News

Editor: 612572 Brian Manton (email: evneditor@gmail.com)

Advertising: (email: evnadverts@gmail.com)

Distribution: 614085 Iris Mollart

Archived copies: (from 2007) www.eastrypc.co.uk/evns.asp

Hard copies (c1930-2006) - Sandwich Guildhall Archives.

To view/study contact Town Clerk's Office 617197

Village Diary - kept at the Post Office, for all village organisations' fixtures, events & meetings.

Village Hall Bookings - Booking Clerk 614054

Village Forum - www.facebook.com/eastryvillageforum

Welcome Pack - information for people new to Eastry

Rosemary Barwick 611420

What's On and Local Events - page 4

Young People's Contacts

Young People's Club (next to the Gun Park)

Have fun and make friends
Admission free



Meetings: Tuesday 7pm - 9pm (Age 12-19)
Wednesday 6pm - 8pm (Age 9-16)
Thursday 7pm- 9pm (Age 12-19)

Contacts: Chairman Dick Laslett (07702 459332) dicklaslett@yahoo.co.uk

For party bookings or hall hire - contact Monica in Bubbles Nursery or the Chairman.

Incy Wincys

Baby and Toddler Group in the Young People's Club meet every Monday including school holidays (apart from bank holidays) 9.30am to 11.00am.

We have toys for all ages and arts and crafts and lots of music singing and movement.

Also we provide a healthy snack for children and tea and coffee for parents.

For more info contact Sam or Ria on incywincys@hotmail.com

Rainbows

Meet on Mondays

Contact Ginny Harvey
on 611183

Brownies

Meet on Wednesdays

Contact Linda Clarke
on 614553

Guides

Meet on Fridays

Contact Jooles George
on 813752

10th DEAL EASTRY SCOUT GROUP

Group Scout Leader: Graham Baker 07837 430167 / 01304 611487

BEAVERS (5¾-8yr)

Monday 6pm - 7.15pm

Leader Elinor
07429 294539

CUBS (8-10½yr)

Tuesday 6.30pm - 8pm

Leader Emma (contact
Graham Baker)

SCOUTS (10½-14yr)

Wednesday 7pm - 9pm

Leader Vacant (contact
Graham Baker)

EXPLORERS (14yr+)

Meet every other Friday from 7.45pm to 9.15pm and focus on the Duke of Edinburgh Award Scheme
Contact: Graham

FOR BOOKINGS

Contact: Marion Wanstall (617854)
or the Group Leaders

NEW MEMBERS ARE WELCOME

Scouting is fun for adults too. If you would like to help then please call Graham.

Local Events

Frost Fair - Saturday 2nd December 10.00am to 2.00pm.

Refreshments, Seasonal floral decorations, Arts, Crafts and much more in the grounds of Beacon Hill Cottage, Little Mongeham, CT14 0HW

Eastry Horticultural Society - Tuesday 12th December

Christmas Social Evening. 7.00pm start.

East Kent Art Society - Tuesday 5th to Sunday 17th December
10.00am to 4.00 pm.

A Christmas Exhibition at St Peters Church, Sandwich in conjunction with the Christmas Tree display.

As well as the artwork, there will be cards and craftwork on display.

Tea, Talk and Tears Wednesday 6th December 2.00pm to 4.30pm

Why not come along to the Village Hall and enjoy a giggle or two with Rose Beer?

£4.00 on the door includes tea, cake and a raffle ticket. Proceeds to the Village Hall Fund.

Walking Nativity Thursday 14th December

See page 13 for details.

Carols Around the Christmas Tree Monday 18th December

See page 13 for details

Betteshanger Park Thursday December 21st to Sunday December 24th

Make a special Christmas ornament to adorn your home. Craft your own ornament such as a Willow Star, Pine Cone Fairy or Wooden Snowman.

£3 per ornament. Booking not required.

Peter Pan at The Marlowe Theatre Wednesday 10th January 6.00pm from Eastry.

Kick start the New Year with our annual outing to the pantomime. As always this will be a fun fab evening, tickets cost £35 to include coach transfers.

For information, call Carole on 611847 or email me at carole.finch@hotmail.co.uk

ELIG Wednesday January 24th at 7.30pm in the Church Hall
Ken Chapman talk "Monks Wall Nature Reserve"

Christmas Drawings from the Primary School

Once again, some excellent drawings were created by the children at Eastry Primary School depicting the theme of "What does Christmas mean to you?". A shortlist of the drawings were judged by the Friday Morning Coffee Break. All the drawings will be displayed in the Church.

The cover picture was by Emily Paul - class 5. The runners-up appear on the next page and were by:

- | | |
|-----------------------------|----------------------------|
| a) India Robinson - class 4 | b) Fern Tingey - class 6 |
| c) Georgia Jenner - class 3 | d) Hattie Gleave - class 1 |

Royal British Legion - regular monthly meetings at 11.00am at The Five Bells on third Sunday of the month (excluding August).

New ex-services and social members (no military service requirement) warmly welcomed.

Further details from Terry James 614245 or John Arnold 449842

Tilmanstone Village Market Tilmanstone Village Hall

First Saturday of the month 10.00am - 11.00am Admission 20p

Regular Village Hall Events
Kent Mobile Library Service 9.10am - 9.30am Fridays 1st, 15th, 29th December 5th, 19th January
Coffee Break Everyone welcome - Free refreshments Fridays 9am-12noon (closed 22nd and 29th December)
Bangers and Bingo Saturday 13th January 10.00am to 3.00pm
Hearing Aid Clinic Fridays 10th December & 12th January 10.00am - 11.30am

Disclaimer

The Editor reserves the right to cut, edit or refuse to publish any contributions and does not necessarily agree with opinions expressed in published articles. All advertisements in the magazine are inserted in good faith, but the magazine committee accepts no responsibility for any statement made by the advertisers; nor endorses the products or services offered.



Church Contacts

St Mary's Parish Church

www.eastrybenefice.co.uk

Clergy:

Revd. David Ridley	619619
Revd. Jennifer Pilcher	611472
Revd. David Willis	611959

Bell Captain:

Mick Johnson	365118
--------------	--------

Organist:

Maureen Norman	366761
----------------	--------

Church Wardens:

Dr. Alastair Carnegie	813120
Jo Slater	619873

Assistant Church Wardens:

Mary Goosen	611306
Sue Brearley	761668

Church Hall Bookings:

Bob Barwick	611420
-------------	--------

Enquiries:

Please phone the office	611323
-------------------------	--------

Church Office

Benefice Office, The Church Hall, Church Street, Eastry, CT13 0HH

Wednesdays 11am - 1pm and Fridays 10am - 12noon

Tel 611323 e-mail - eastry.benefice@gmail.com

During out-of-office hours a message can be left.

Benefice Website

Please visit our website: www.EWBchurches.org.uk

Find us on Facebook at: www.facebook.com/EWBchurches

The Church Registers

Baptisms:

8th October	Arthur Patrick
8th October	Thomas Ball
5th November	Lorna Meakins

Funerals:

18th September	Alan Johnson (Barham)
27th September	Betty Howell (Barham)
6th October	Ronald Cambell (Barham)
19th October	Bob Willis (Barham)
13th November	Fran Deverell (Barham)

Church Services

Sunday mornings at Eastry

Every Sunday: 8.00am Holy Communion (BCP)

1st Sunday, 9.30am Come and Praise in Church Hall

1st to 4th Sundays, 10.30am Sung Eucharist

Evensong Services 6.30pm

10th December and 14th January (Tilmanstone)

7th January (Northbourne)

Wednesdays

10.00am Holy Communion Eastry Church Hall - all are welcome

Christmas Services

School Christingle Services

Wednesday 13th December (classes 3,4,5,6) at 2.15pm

Thursday 14th December (whole school) at 9.15am

We hope that you will support the Christingle Services for Eastry School in aid of the Children's Society in Eastry Church.

Sunday 3rd December (1st Sunday of Advent)

Holy Communion: 8.00am

Come and Praise: 9.30am

Holy Communion: 10.30am

Advent Carol Service: 3.00pm at Northbourne

Sunday 10th December (2nd Sunday of Advent)

Holy Communion: 8.00 am

Holy Communion: 10.30am

Evensong: 6.30 pm Tilmanstone

Sunday 17th December (3rd Sunday of Advent)

Holy Communion: 8.00 am

Holy Communion: 10.30am

Carol Service: 6.30pm

Christmas Eve (4th Sunday of Advent)

Holy Communion: 8.00 am

Holy Communion: 10.30 am

Crib Service: 4.00pm

Midnight Service: 11.30pm .

Christmas Day

No service at 8.00am

Holy Communion: 10.30am

New Year's Eve

Holy Communion: 8.00am

Benefice Service, Songs of Praise with Holy Communion: 10.30am

Watchnight Service: 11.45pm Northbourne

Epiphany

Saturday 6th January 2018 at 7.00pm (location TBA)

Sing Along and Tea

Tuesday 19th December. Church Hall 2.30pm - 4.00pm
Come and sing carols and enjoy a cup of tea, MINCEPIES and cake.

Tuesday 23rd January. Church Hall 2.30pm - 4.00pm
We will sing old well-known songs and enjoy a cup of tea and cake.

There will be a raffle. Everyone is welcome. **CONTACT 611400**

Friday Friendship Lunch Club

Fridays 8th December, 12th January. Church Hall at 12 Noon
Contact 611400

Eastry Community Christmas Day Lunch

Join us for a traditional Christmas Lunch and fun at the Church Hall
25th December - 12pm to 3.30 pm
£5 per person

Please book your place - telephone Julie Culver on 01304 611691 so we know how many to cater for.

Christmas Roses

Christmas is a time for bringing families together, but it can also be a time of sorrow for those who have lost loved ones.

The Flower Arrangers would like to place roses amongst the Christmas floral arrangements, to remember loved ones.

If you would care to donate a rose in memory of a loved one at this time, the cost is £3 per rose.

PLEASE GIVE YOUR DONATION:

Liz Kinns, 81 Peak Drive (611400), or **Jinny Fagg** at the Church



Rector's Letter

It always seems somewhat early to be writing an article for Christmas at the beginning of November. And yet, if the shops and TV ads are anything to go by, we could be forgiven for thinking that we are in the middle of the Christmas season already. There does seem to be something of a contradiction that, for the Church, Christmas begins on Christmas day and lasts for the following 12 days, whilst in wider society, Christmas celebrations begin long before 25th December and tend to draw to a close shortly afterwards.

For some, it may come as a bit of a surprise to learn that the Christian Church has always been somewhat ambivalent about the celebration of the birth of Jesus. In fact, in the early years of the Church, Christmas was not celebrated at all. In the early centuries, birthdays were not remembered, but it was someone's death which was far more significant. So early on for the Church, the emphasis was very much on the marking of Good Friday and Easter – the death and resurrection of Jesus. It was not until the 300s that Christmas was mentioned at all and for most of the history of most of the Church, the Epiphany, on 6th January, has been more important than Christmas.

And further, during the mid-1600s, under the influence of the Puritans, owing to its perceived excesses, the celebration of Christmas was banned altogether, at least until the Restoration of the Monarchy in 1660.

It is not clear either why Christmas came to be celebrated on 25th December. It may well be that it was a way of 'Christianising' pagan festivals around that time of year, which marked the passing of the longest hours of darkness. But it is also quite possible that having already established the date of Christ's conception as 25th March, his birth would naturally fall nine months later – hence 25th December.

But whatever the background two things seem to be worthy of reflection today.

First that mid-winter is, according to sociologists, a natural time for a celebration. With the darkness and cold and long nights, what better way to shake off the depression than a good party? So, despite what the Puritans might think, it is surely worthy and natural that we should get together with family and friends and eat, drink and be merry, while looking forward to the emergence of spring.

And second, it is quite right that we should celebrate the birth of the child Jesus, especially given everything it says about the intrinsic value of humanity itself and the special place of the poorest amongst us.

But the Church also offers a helpful corrective to the excesses of Christmas through the marking of Advent, which starts at the beginning of December. During the four weeks of Advent, leading up to Christmas,

we are encouraged to a time of inner reflection and preparation, so that we may be the more readied to mark our Saviour's birth. A bit of 'time out' from the hustle and bustle in the run up to Christmas must be a helpful investment for us all – but not least in making us more aware of those for whom Christmas is a challenging time.

So, in conclusion, may I wish you a joyous, but thoughtful, Christmas, and a Happy New Year.

David Ridley

Why, at a carol service .. ?

At a carol service we sing our carols and hear Bible readings about those of old who foretold the coming of Jesus, Mary and Joseph, the baby Jesus in the manger, the choir of angels and the shepherds, the star and the wise men.

Then, ignoring these things, we end with the traditional Christmas Gospel reading from St. John's gospel chapter 1. Why? It has only a passing reference to Jesus' birth in verse 14, "*The word (code for Jesus) was made flesh, and pitched his tent among us.*"

This traditional reading puts the Christmas story of the birth of Jesus into context in several ways - Jesus is not just a baby in a manger.

It starts in verse 1, as does Genesis, the first book in the Bible, with "*In the beginning*" adding, "*the word was with God, and the word was God,*" to show Jesus, the word, is from everlasting, and is God. This is complemented in verse 14 by "*The word (Jesus) was made flesh,*" he was man as well as being God.

It goes on in verse 3, "*Through him all things were made; without him was nothing made that was made.*" Jesus was involved in creation.

It also brings in Jesus' intended link with us in verse 4, "*In him was life, and that life was the light of mankind.*" Then in verses 11 and 12, "*He came to that which was his own, but his own did not receive him. Yet to all who received him, to those who believed in his name, he gave right to become children of God.*" He came to enable us to have a relationship with him, and leaves us with the challenge - whether or not we receive him.

Donald R. Baldwin

Eastry Theatrical Company
Presents the pantomime
CINDERFELLA



on

Friday 16th February & Saturday 17th February - 7.30pm

(Doors open at 7pm)

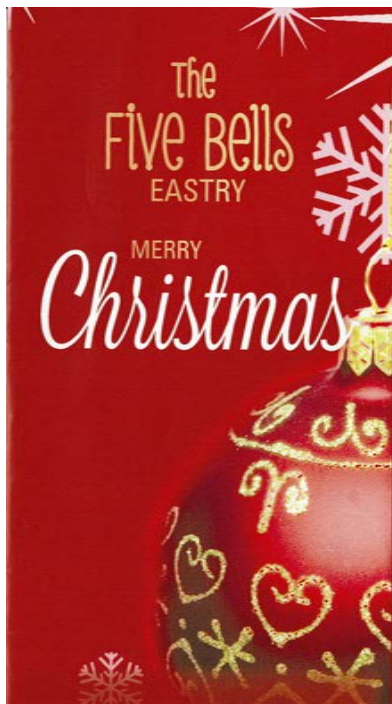
(plus a matinee performance on Saturday - 2pm)

(Doors open at 1.30pm)

Tickets available from The Newsagents (Bickers)

Eastry Pharmacy and the Box Office (contact 611484)

Cost £5.50 per ticket, available from 8th January 2018



Bookings still being taken for Christmas



Christmas party
menu available



1st to 23rd December
2 courses £14.50, 3 courses £17.50

Christmas Day £62.50 per person
(children £30)



New Years Eve dinner



- reservation only - to be served
at 7.30pm. £75 per person.

Menus available from the bar or on our
website thefivebelleastry.com

Boxing Day Quiz - 11.00am

EASTRY SCHOOL WALKING NATIVITY
THURSDAY 14TH DECEMBER



Meet 3.00pm at Eastry School
 or 3.30pm St Mary's Church
 for Prayers and Carols
 arriving 4.00pm at the stable
 - The Five Bells

Children are invited to dress as Angels
 and Shepherds

Outdoor event, so please wear
 suitable clothing

Children must be accompanied by an adult
 For further details please contact:
 Rev David Ridley (619619)

Carols Around the Christmas Tree
at the Five Bells

Monday 18th December 6.30pm.

St Mary's Events team and Mary from
 the Five Bells, invite you to come along
 to this lovely evening of carols,

Mary will once again provide mulled
 wine and mince pies with juice and
 lollies for the children.

Wrap up warm and celebrate
 Christmas at this great community
 celebration.

If you play a musical instrument and
 would like to bring it along, you would
 be most welcome.



Eastry War Memorial Refurbishment

A number of the members of Eastry Royal British Legion had noticed that the condition of the War Memorial had deteriorated and was looking far below what we would like our village to be judged on. A meeting agreed that the RBL should approach the Eastry Parish Council for assistance in funding the works. The Council, who are responsible for the War Memorial, agreed to provide £250.00 towards the costs involved. Thanks to them for their support.

The RBL approached the scout leader, Graham Baker, to see if his scouts would be willing to assist with the cleaning of the lower stone plinth to the memorial. We were pleased that they agreed to do this and made a great improvement to the area.

The wooden surround to the planting area was so rotten that replacement was needed. A legion member, John Foley, was asked to take on the task of removing and replacing this surround with a hardwood one. This was done at a greatly reduced cost. Many thanks John.

We then approached Archers Low Nursery for help and advice regarding which plants would suit the surround best. Sarah offered to draw up a planting plan. She also advised on what compost & slate chippings would give a pleasing effect. She supplied this at a greatly reduced cost. Many thanks Sarah.

A team of RBL members took on the job of digging up the planted area. This having become greatly compacted of the years. All old weeds and grass were removed and compost added. Weed control membrane was laid and planting commenced.

Sarah had planned for a skimmia to feature at each corner with 20 ground cover plants on a red white & blue theme to go between. In addition a 'Peace Rose' donated by our Twinned Village, Longpre-Les-Corps Saints, was installed.





Our Rector, David Ridley, was present at the completion of the work and thanked all involved on the hard work they had put in. We hope that the Remembrance Service and dedication of the bedding area will be appreciated by our villagers, twinning guests and visitors generally for many years to come.



POPPY APPEAL 2017

We, Royal British Legion, Eastry, would like to thank all who donated to this year's appeal. The total amount will be published in the next edition of the Eastry Village News.

We wish to offer our gratitude to all of the businesses, shops, pubs, schools, door to door collectors and those hardy folk who stood in all weathers outside of the Village Hall.

Well done to you all. Without your assistance the amount raised would never reach the levels we achieve.

A very special 'Thank You' must go to Steve Smith. Without his tireless efforts, every year the appeal would not be the success it is. Well done Steve.

Last year over £4,000.00 was raised. We hope to approach or even surpass that amount this year.

Ps. If you feel you would like to help us next year, contact any member and they will put on the list.

John Arnold. Branch Secretary.

In The Garden

Firstly, I would like to thank all those readers who have made enquiries and wished me luck regarding the "All Year Round" garden that I am creating at the Care Home where my wife is a resident, and they have also asked me to keep them updated.

I planted over 800 daffodil bulbs, along with tulips, fritillary, dwarf iris and over 300 crocuses. How many crocuses will appear next spring I just don't know. Soon after they were planted, the garden was invaded with squirrels, who took pleasure in digging them up and transporting them off to neighbouring gardens. I now wish I had used my old method of keeping squirrels, mice etc., away from the corms by dipping them in paraffin before planting. I will next year!



The cyclamen which I planted are lighting up the garden, dahlias, roses, fuchsias and geraniums are still in flower. I would also like to say a big thank you to friends who have donated plants and bulbs. So if you are planning to split up any perennial plants, think of me, thanks!!

As we all know Christmas is only just around the corner and it's an ideal time to drop a few hints for those gardening

presents. I'm a big believer in buying good quality tools especially if they are stainless steel. I know they are more expensive, but they are easier to keep clean and thus last longer.

Popular Christmas presents are dwarf pot-grown roses and chrysanthemums. Please don't throw them away after flowering, all you need to do is keep them comfortable until next spring, keeping the compost only just moist. Don't over water otherwise you will encourage Botrytis (grey mould) to set in and kill the plant. There are normally four to five plants in a pot, so next spring all you need to do is just split them up and plant them in your garden. When they were originally planted in their pots, they would have been treated with a 'dwarfing agent'. Don't worry, they will soon grow out of it and make nice sturdy plants.



I expect by now you will have ordered your seeds for next year, or you have been to the local garden centres. Please do not store your packets



of seeds in a warm place otherwise this may reduce the germination. It is better to ask your 'Better Half's' permission to keep them in the salad tray in your fridge, but don't tell I suggested it.

I hope you all have a wonderful Christmas and a Peaceful and Happy Gardening New Year, but most of all,

"Enjoy your Gardening",

Art E. Choke



Eastry Cares – Progress to Date

Eastry Cares was launched in Spring 2017, and continues to try to meet a need in the community that other agencies cannot fill. Predominantly our clients have found out about us via the surgeries in Eastry or Sandwich; via Age Concern; or the best referral system - good old "word of mouth".

Needs have been wide-ranging: befriending, form-filling, dog-walking, occasionally shopping, but mostly driving (and we welcome new drivers).

We estimate we are able directly to help 8 out of 10 enquiries (and we average two to three calls a week). Sometimes our volunteers are just not available (particularly in holiday seasons); but more often, when we cannot help, the requests are beyond our remit, and we have to seek expert advice and refer to social services or other agencies.

The happy feedback we have received has been most rewarding, whether for a one-off emergency; a helping hand in an hour of need; or short-term consistent help.

We are proud to be a short-term solution to community needs - we are not "instead of" other services.

As we approach the festive season, we encourage villagers who may feel lonely, and are perhaps non-churchgoers, to still come along and join church and community events in Eastry because there is a lot going on. You will always be welcome, and you don't have the excuse that you cannot get there if we can get a volunteer to transport you!

My colleagues and I on the Eastry Cares number 07787 612 238 will always try to help, or refer you to someone else if we cannot.

Best wishes to you all, **Libby Dix**

A Village Remembers

Lieutenant Leonard Morgan The Buffs (East Kent Regiment)

Died of Wounds received at Masnieres, France 1st December 1917

Commonwealth War Graves Commission Cemetery Register records show Leonard (Jack) Morgan serving with the 4th Battalion, The Buffs when he died. It has proved impossible to locate this Battalion's War Diary, but inspection of the CWGC's Graves Registration Report reveals that he was "att. RGLI". Unfortunately, there appears to be no War Diary in existence for the Royal Guernsey Light Infantry, but a Wikipedia entry for the RGLI reveals that the 1st Battalion took part in the Battle of Cambrai, in France, between 20th November and 3rd December 1917.

The entry records "the RGLI's role was to go through the Hindenberg Line after the first wave and take 'Nine Wood' to the North of Marcoing. This went according to plan, and they then moved into Marcoing and on to the front line at Masnieres". This was almost the closest that any British unit came to Cambrai during the Battle.

It is not clear where Leonard actually died, but he is interred in Grave II.D.5 in Fins New British Cemetery, Sorel-Le-Grand, some nine miles from Masnieres.

Leonard Morgan was born in Blackheath, Kent (now South East London) in mid 1884 and was educated at Blackheath. His parents were Edward and Georgina Morgan. The family moved to East Kent and lived at various addresses, including, for some years, at Little Statenborough House in Eastry. A fine baritone singer, Leonard, or Jack as he seemed to be known, was honorary choirmaster at Eastry Parish Church.

Soon after the outbreak of War in 1914 he enlisted in The Buffs, but shortly afterwards was transferred to the Queen's Royal West Surrey Regiment. In April 1915 he obtained a commission and was gazetted to a Battalion of his former Regiment. His medal card states his date of entry to France as 27th September 1917. The 1st Bn. RGLI were noted as departing for France on 26th September, so he may already have been attached to them.

The medal card, which wrongly shows him as being Killed in Action on 30th November 1917, records the award of the British War Medal and the Victory Medal.

As well as being commemorated on our War Memorial, Leonard's name also appears on the Deal Great War Memorial Plaque in the Victoria Hospital in Deal, as L. Morgan, and on the World War 1 Memorial Plaque at St. Leonards Parish Church in Rectory Road, Deal, as L.J. Morgan.

In a memorial service to 33 year old Leonard Morgan, held on 14th. December 1917, the Vicar said of Lieutenant Morgan that he had exercised a beneficial influence over the choirboys. He had a very high sense of duty, and real convictions in reference to religion. His pure, sincere life had been an inspiration to others.

613086 Lance Corporal Alfred Ernest Gambrill London Regiment

Died of Wounds near Etricourt, France Sunday 2nd December 1917

Alfred Gambrill died of wounds at No. 21 Casualty Clearing Station, near Etricourt on 2nd December 1917 aged 25. He was serving with the 19th (County of London) Battalion (St Pancras) of the London Regiment, and their War Diary reports that on 29th November 1917 they were subjected to a heavy bombardment of gas and HE (high explosive) shells whilst in trenches in Bourlon Wood on the Somme battlefield. It is most likely that this was when Ernest received the wounds to which he succumbed on 2nd December. It was reported that more than half the Battalion was affected by the gas and officers and men were being sent down from the Battalion Aid Post to the Casualty Clearing Station in a continual stream until 1st December, when they were withdrawn from the front line.

Lance Corporal Gambrill rests in Grave IV.C.27 in Rocquigny-Equancourt Road British Cemetery, Manancourt, which was originally the burial ground used by No. 21 and No. 48 CCSs in 1917. The entry in the Index to War Deaths gives his rank as Lance Corporal but his Medal Card shows him as a Private and that he was awarded the British War Medal and the Victory Medal..

Alfred Gambrill was born at Stumps Court, Harnden, Eastry in the early part of 1892, the son of William, a wagoner, and Sarah Gambrill. He was baptised in St Mary's Church on 3rd July by the vicar, Charles A. Lampen. By the time of the 1911 Census, he was working as a wagoner on a farm, living as a boarder at Eastry Court with George and Louisa Hatton and four other farm workers. One of these was ERNEST MAPLE, who would become a casualty in 1915.

Legend and Winter Constellation “Auriga the Charioteer”

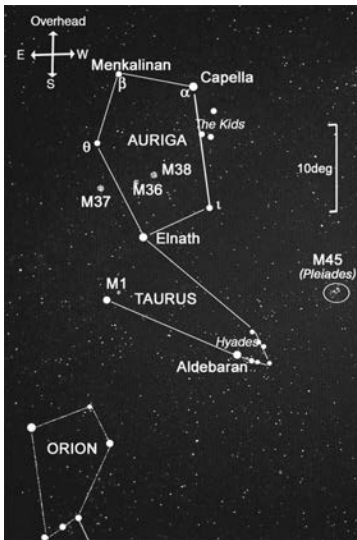
Summary of the Legend of Auriga^{1,2}

A popular legend is that the Charioteer is Myrtilus, son of Mercury, who served King Oenomaus of Pisa. The king had a beautiful daughter named Hippodamia who had many suitors. However he had learned from an oracle that he would be killed by the man who married his daughter. To prevent this happening every suitor had to take part in a four-horse chariot race from Pisa to the Isthmus of Corinth competing against the chariot belonging to Oenomaus whose chariot was driven by Myrtilus and who secretly loved Hippodamia.

The challenger rode with Hippodamia in the competing chariot. If he won the race he could marry Hippodamia. but if he lost King Oenomaus would slay him. Thirteen suitors lost their lives in this way. Pelops, a grandson of Jupiter, asked for her hand and accepted the chariot challenge. He

promised Myrtilus a half-share of the kingdom if he fixed the race. Myrtilus agreed, as he thought he could persuade Hippodamia to marry him. Before the race he removed the lynchpin that secured the wheel to the king's chariot. The wheel came off during the race and King Oenomaus was thrown out and dragged to his death by the horses.

Myrtilus survived and joined Pelops and Hippodamia for the ride back. Pelops realised that if it was ever discovered that the race had been fixed he would be disgraced. Pelops refused to give Myrtilus the half share of the kingdom so they fought and Myrtilus was killed. His father Mercury was devastated by this, and placed him in the heavens as the constellation Auriga.



The constellation of Auriga

Auriga³ is best viewed in the winter months high in the southern sky and its position relative to other prominent constellations is shown in the picture. It is one of Ptolemy's 48 constellations and has a pentagon shape. The bright yellow star, Capella, called the "She-Goat" marks the charioteer's left shoulder and Menkalinan his right shoulder. The brightest stars in Auriga are: α (Capella), β (Menkalinan), θ and ι (magnitudes: 0.1, 1.9, 2.6, 2.7 respectively).

The bright magnitude 1.7 star Elnath used to be γ -Auriga but is now β -Taurus.

Auriga has three Messier⁴ open star clusters M36, M37 and M38, whose positions are shown on the picture of the constellation. They can all be observed with binoculars and resolved with a small telescope. M36, the Pinwheel Cluster, resembles the Pleiades star cluster, M37 is the brightest of this group and is resolved into a large number of stars in a telescope and M38 the Starfish Cluster, has a cruciform shape and a neat bright outline. Their respective sizes are 0.2, 0.4, 0.35 degrees and have apparent magnitudes 6.3, 6.2, 7.4.

There are other interesting nebulae and star clusters in the adjacent constellation Taurus "The Bull". These are M1 "Crab Nebula" which is the remnant of a supernova observed by the Chinese in 1054AD; M45 "Pleiades or Seven Sisters" star cluster which is magnificent in binoculars, and the triangular Hyades star cluster which includes the magnitude 0.9 star Aldebaran "Bull's Eye".

Michael Kinns

References

- 1 David E. Faulkner, "The Mythology of the Night Sky- An Amateur Astronomers Guide to the Ancient Greek and Roman Legends", ch. 3 Patrick Moore's Practical Astronomy Series, published by Springer.
- 2 <https://www.universetoday.com/19527/auriga/>
- 3 <http://earthsky.org/constellations/closeup-on-auriga>
- 4 <http://www.messier-objects.com/>

Eastry Parish Council

The chairman, members and staff at Eastry Parish Council would like to take this opportunity to wish everyone a Merry Christmas and a Happy New year. As usual, the Parish Council has provided the Christmas trees at the Village Hall and outside the Five Bells and would like to thank the village hall committee and Mary Franks for providing the electricity for the lights.

Coffee Break has had another successful year and the Parish Council continue to sponsor this event that is open to everyone in the Parish and surrounding areas. Every Friday morning in the Village Hall from 9.00am to noon, you can get a cuppa and a cake or two, have a chat and meet new people. The hearing clinic still attends on the 2nd Friday of the month so you can get your batteries changed and tubes replaced if needed. The Library Van also attends every other Friday so watch out for the dates. We also get occasional visits from Kent Fire and Rescue Service who can give advice on fire safety. One of your District Cllrs attends regularly as does the Community Warden, so a chance to see them if needed.

The Small Organisation Grants for 2017/18 have now been approved and paid. The successful applicants were:

- | | | |
|-------------------------------|------|---|
| a) Eastry Neighbourhood Watch | £100 | New signs and installation |
| b) Eastry Cricket Club | £300 | Preparation of the square for 2018 season |
| c) Eastry Village Hall | £507 | Provision of an external weatherproof noticeboard |
| d) Royal British Legion | £250 | Refurbishment of the War Memorial |

The footpath in the Gun Park has finally been replaced. This was funded jointly by Eastry Parish Council, Dover District Council and Kent County Council. Also paid for by the Parish Council, is the new bench outside the Church, which was installed as a memorial to Cllr Sandra Hooper who sadly passed away in 2016.

All the best for the New Year **Sarah Wells**

Clerk to the Parish Council



In October, Eastry WI, celebrated their 85th birthday with a party attended by some past and present members as well as friends from other institutes in the area. There was an abundance of food and drink, entertainment provided by some of the Eastry committee, and lots of conversation and laughter.

November saw a more serious meeting as it was our Annual Meeting and Eastry WI has a new President and are looking forward to a new year of meetings, outings and activities.

December 6th will be Members' Christmas Meeting with cheese and wine, (we've had rather a lot of cake recently!)

We will be planning our meetings remembering head, heart and hands, so that we learn something new, find inspiration from speakers and each other and practice new skills. At our February meeting we have Peter Ewart with Tales of a Genealogist and at meetings later in the year we will hear about the work of a domestic abuse service and Kent Surrey and Sussex Air Ambulance. There will also be a quiz night, and a couple of craft sessions.

We welcome visitors to any of our meetings which take place on the first Wednesday of the month (except for January) at 7.30pm in The Village Hall, we make a small charge for visitors so that they can decide whether they like us before becoming members.

Every Tuesday, there is a craft group which is open to anyone and we meet in the Church Hall at 9.30am until noon. People bring their knitting, sewing or paper craft and we enjoy learning from each other. Sometimes a member will lead a workshop, recently we have made lavender bag clowns and small Christmas trees from card and fabric. There is a small charge but it includes tea or coffee and cake! It goes without saying that new faces are always welcome.

Sue Hankins President tel. 619414

Foodbank Centre opens in Eastry

Five years ago, Deal Foodbank was launched, and five food bank centres were set up, two in Aylesham, two in Deal and one in Sandwich. Vouchers are available from a large number of helping agencies and personnel, including Citizens Advice, Dover Council, Surestart, and Salvation Army. Anyone who is in need is assessed and given a voucher which entitles them to three days food. There are also emergency food boxes for those who are in sudden need but unable to access a food bank centre.

In the light of increasing transport costs and decreasing bus services, it was decided to open two more centres at Eastry and Ash, in order to be accessible to more rural areas, and to ensure that there is a foodbank within easy reach on every weekday. In Eastry the pharmacy, Community Warden, primary school and Rector are able to issue vouchers.

Both centres opened in the first week of October, following the training of two teams of volunteers, and are being used regularly. It is expected that they will both, like Sandwich, be quieter centres than Deal and Aylesham, but it is very encouraging to see a gradual take up of vouchers, and both teams are very positive about what they are achieving. The advantage of the smaller centres is that there is more time for volunteers to spend with callers, enabling them to find agencies in the area which can help them further with issues such as debt, benefit delays, and other welfare needs.

The main aim of foodbanks is to encourage people to find ways, with help, out of their current situation and to promote independence.

If you would like to leave a donation for the Foodbank, there are collection points in Eastry School and Church and also at the Coop supermarkets in Sandwich and Deal and Sainsbury's in Deal. There is always a particular need for personal hygiene and domestic cleaning items, juice and squash and instant mash!

Sheila Ward - Project Manager

Christmas Wishes from your District Councillors

It has come around to Christmas again so a chance to reflect on the year. Swift progress has been achieved on the new leisure centre at Whitfield. This will be a modern facility and bring a new class of sporting venue to the district. The St James development is getting closer to opening and the businesses are into recruiting the 500-odd staff who will be involved. We believe the eventual result will be the best for the district.

Other plans are underway and it seems like the district is in the middle of a growth spurt.

At this time we would like to thank residents and the parish council for their work and we look forward to the challenges in the new year.

Dover District Council will provide free parking in their car parks on Saturday 2 December.

Small Business Saturday is designed to raise the profile of small businesses across the UK. DDC is supporting this initiative for the fifth year running, by offering free parking in its off-street car parks.

Parking charges will still apply at car parks not owned by DDC, including the Sainsbury and Co-op car parks in Deal and for 'on-street' parking. Other parking restrictions, including yellow lines, will still be enforced.

Merry Christmas and a Happy New Year
Nick and Steve



Neighbourhood Watch

An urgent request from the staff of Eastry surgery.

Recently, some weekend repeat prescriptions have been tampered with. Fortunately, there was enough information remaining that staff could contact the patients concerned. Ideally deliver your repeat prescriptions on weekdays and hand them in at the reception desk. If you have to deliver your prescription at the weekend, make sure that the prescription is pushed well into the letter box, so that it falls into the basket below. Should anyone in the village witness unusual behaviour then don't hesitate to telephone the police on 101. These calls never cost more than 15p however long the call takes and always pass on the information that Eastry village is a Neighbourhood Watch area.

Neighbourhood Watch has been working with our KCC Warden Hannah Osborn for a year now. She has settled into the village but is obliged to share her time with Ash and Sandwich and is part of a team working one day a week in Dover. Now we have been allocated a new PCSO Emma Carmichael. Emma is well experienced as she has Aylesham and Wingham and its hinterland on her patch. See page 2 for contacts.

Eastry NHW has been awarded a Parish Council grant to maintain and install new signs. Four new signs have been obtained and our village window cleaners have agreed to erect them. Do please report any missing or damaged signs as the ties do eventually wear out. With the current plans for new homes I am sure that more signs will be needed.

Sally Barclay of the Sunflower Centre at Sandwich Age Concern was our special guest at the Eastry AGM. The centre cares for people over the age of 50 years with dementia at a cost of £35 per day. Carers do not necessarily have to stay and the centre provides all sorts of activities for the clients as well as lunch and light refreshments. Sally wondered if Eastry would be interested in becoming a Dementia Friendly village - feedback needed please. Sandwich Co-op is a registered Dementia Friendly store and has a very good relationship with Age Concern. Contact Sally on: sally.barclay@ageconcernsandwich.com. Tel. 614237

With Christmas coming the telephone scams are arriving thick and fast. Do be careful, if it sounds too good then just put the receiver down and under no circumstances give any personal or bank details. Don't accept parcels that you know you haven't ordered. Be prepared for doorstep callers collecting for charity, this is not the way to give, anyone can put on a tabard and a fake ID card so find more reliable ways to give. Report such activities to our KCC Warden Hannah or our PCSO Emma, (details on page 2). The NHW Executive at Dover recently wrote to Great Ormond Street Hospital concerning doorstep collections, especially those taking place after dark. It can be quite frightening for the elderly who are reluctant to open any door at the end of the day.

Finally, don't leave your Christmas shopping visible in the car or leave presents in full view through the house windows. Any packaging put out for recycling can give away a lot of information to would-be thieves. Be careful what you put on social media such as Facebook, don't advertise your expensive presents or tell the world that you plan to be out for a day - you don't know who is looking for opportunities to raid a home.

Happy Christmas to everyone

Sheila Smith - Chair Eastry Neighbourhood Watch

Be Tempted...

By now you will hopefully have seen the signs advertising my new coffee shop, Tempted... here in Eastry (you can't miss them they're pink!)



My name is Michele and I have lived in the village for 16 years now with my son. I'm originally from Norfolk and unfortunately still have a bit of a Bernard Matthews accent (bootiful!!!) I retired from a full public service career in March and wanted a complete change of profession. I have always wanted to start my own business and enjoy cooking/baking but never had enough time to do as much experimenting as I wanted. My plans were made slightly more

difficult after rupturing my Achilles' tendon playing netball in June with a deadline to open in October. Thankfully I am on the mend now. My partner tells me no more netball so instead I am taking to cycling (his passion). Needless to say cyclists, walkers and well behaved dogs are welcome though the list is not exhaustive.

Eastry is such a lovely village and generally well served but I felt there was room for a bespoke coffee shop and as much as I love cake (who doesn't?) my intention is to progress to provide healthier options as well as gluten, dairy and sugar free treats. I serve paninis, sandwiches, soups, savoury treats and of course cake. I do not provide full cooked meals as they are already well catered for within Eastry. I have also tried to locally source as much as possible.

You will always receive a smile and a warm welcome as you come in and I do like a chat and a giggle. So whether an early kick-start coffee, after the school run, a ladies/gents light lunch, afternoon tea or simply a coffee and chat, don't be shy, come in and be Tempted...!

Please see my advert on page 30 for my opening hours.

The Eastry Village News has been a source of information to the village since about 1930. We have been looking back at the archives and have come across some interesting articles which we think you'll be interested in reading. The piece below was first published in the 1980s and was written by Michael King.

Anglo-Saxon Origins

The place names around the villages of Eastry and Tilmanstone are almost without exception of Anglo Saxon origin; some like Eastry, Finglesham and Woodnesborough, date as far back as the sixth century. As 'Eastorege', Eastry was the capital of the most easterly division, or lathe, of Kent, and an important royal centre in the Jutish Kingdom of Kent. Finglesham, meaning 'Prince's manor', probably had a close connection with Eastry in the sixth century and its cemetery was the resting place of the leading aristocratic family of the locality, perhaps related to the Kentish royal kindred. Woodnesborough (Woden's mound) might well have been the place of worship for this wealthy family, since it is one of the rare place names denoting a pagan Anglo-Saxon site, like Wye, meaning 'heathen temple', and Easole, meaning 'the god's deep pools'.

The Danes brought a second wave of paganism with them when they settled part of a now Christian Anglo-Saxon England in the late ninth century, but unfortunately Dane Court was not such a Danish settlement, since it comes from the Anglo Saxon 'denu', meaning valley.

A number of local villages were named after obscure tribal leaders or landowners of the Anglo-Saxon era: Tilmanstone, Barfrestone and Nonington were the farmsteads named after Tilman, Beornfrith and Nunna respectively. Goodnestone's patron, Godwine, has a wider claim to fame, however, since he was Earl of Wessex from the reign of Canute to that of Edward the Confessor and the father of Harold II who was killed at Hastings in 1066: Godwine also gave his name to the Goodwin Sands.

Some local place names consist of simple geographical descriptions: Bettshanger was once 'a wooded slope with a house upon it', Updown was 'a house upon a hill' (uppan dun), and Selson 'a farmstead on shelving ground'. Statenborough was a settlement 'at a steep mound', and Highborough Hill apparently the site of 'a high stronghold'. The name of the Lynch in Eastry has come to us virtually unchanged from Anglo-Saxon times, deriving from the simple descriptive word 'hlinc(h)' meaning 'rising ground'. Distinguishing features also form the names of farms at Thornton and Kitington, the former being 'a farmstead by a thorn bush' and the latter 'a home farm with cottages'.

(To be continued)

New Business Opens at the Cross

A new business has opened in the timbered premises, The Cross Farmhouse by the Eastry Crossroads. (See advert on page 29).

Taylor Gurney represents the fruition of a long-held ambition for partners Neil Taylor and Samantha Gurney. A full range of property services will be offered covering Eastry and neighbouring villages and rural areas. This will include estate agency sales, lettings, property management and land & new homes.

Neil Taylor commented "We intend to bring the qualities that we ourselves appreciate in life and in business to our new company. Namely - excellent personal service, professionalism, good communication and an inbuilt drive to do the best for our clients". Samantha Gurney added "Eastry is also my home and I am proud to be opening my new business in the centre of the vibrant community amongst several other existing independent businesses. We will offer the very best service in all property matters to this community".

Neil has worked in property for over 30 years including estate agency, land appraisal and acquisition, new homes sales and relocation search. Full of passion for this new venture Neil enthused - "Having worked across the South-East and in London, I am now really excited to be back working in the community in my East Kent homeland! I am also looking forward to working alongside Sam, with her energy, enthusiasm and meticulous approach. When we saw these premises become available, we knew instantly they were perfect for what we wanted to do".

Samantha is also an experienced private residential landlord and will head up the company's sales and lettings operations. She added - "We will offer free sale and rental valuations and will be offering very competitive fees as we establish the business. Please contact me personally on 01304 619024, via our website at www.taylorgurney.co.uk or our Facebook page.

Road Signs

There are a number of road signs around the village that are obscured by the growth of hedges during the summer.

Please notify Kent Highways of any signs that are no longer visible. www.kent.gov.uk/roads-and-travel/report-a-problem

This website can also be used to report other problems with the roads or pavements including; lighting, potholes or drainage.

Santa's Got a Complex

Does it really seem possible that already this is the Christmas edition of the magazine, it seems only five minutes ago that I was writing for last year's and if regular readers will remember, I was going to hang my knickers up for Father Christmas instead of a stocking. Well - I have to tell you that even that didn't work! So I have come to the conclusion that Santa has got some sort of a complex going on in his head and that is that he doesn't like going to people's houses who live on their own.

Up until my husband died, Santa came to me every year. When I went to bed I would hang my stocking up by my bed and if I felt really hopeful sometimes I would hang a pillow case up - how greedy was that? However in the morning he always left me something. Sometimes in the middle of the night I would hear him rustling about and it was usually about the time my husband got up to use the bathroom. Oh no I would think - I hope he doesn't bump into him! After a while my husband would creep back into bed - usually freezing cold telling me that he'd had to go to the shed 'cos he thought he'd heard a noise out there. He never saw Santa but in the morning there would always be a present left for me.

Those days have sadly passed and although I try to be good, Santa never comes anymore. I have spoken to several people who live alone and they say the same thing, so yes there is certainly something going on in that white old hairy head of his that needs sorting. So if by any chance you should bump into him while he's doing his rounds please tell him that I'd love him to visit me again, there really is nothing to worry about, I'd make him more than welcome.

Merry Christmas everyone!

Rose Beer

Dover District Council - Bin Collections

Non-recyclable Waste Black-Wheeled Bin & Food

Tuesdays 5th, 19th December; 2nd, 16th, 30th January

All Recyclable Waste Blue-Wheeled Bin (Plastics, Tins, Bottles), Cardboard & Food

Tuesday 12th, **Wednesday 27th**, December

Tuesdays 9th, 23rd January

Green Waste

Tuesdays 12th December; 9th, 23rd January

Santa's little helper!

Dear Santa

I don't own any Reindeer
And I haven't got a sleigh
But I'm sure I could be of help to you
In some little kind of way.

You see since I've been retired
I could do with a few extra bob
And after a little bit of training
I might prove good on the job

I wouldn't want to grow a beard
That would really be quite obscene
But just something that would stop me
writing rubbish
In our local village magazine

My body couldn't cope with many hours
So maybe for just one night of the year
Oh and by the way for Tax purposes
My name isn't Rose Beer!

Rose Beer



TAYLOR GURNEY

Village and Rural Estate Agents

**Estate Agency Sales
Lettings
Property Management
Land and New Homes**

An independent and professional service

Taylor Gurney, The Shop, The Cross Farmhouse, Eastry, CT13 OHG
01304 619024

www.taylorgurney.co.uk

Electrickery

Fault finding to full rewires.
Simple switches to magic lighting systems.
Serving Sandwich and beyond...

0795 225 2929

Lawrence James
BS 7671 17th Edition Electrician

28 Peak Drive, Eastry
Sandwich, Kent, CT13 0DY

City & Guilds
Qualified

IET The Institution of
Engineering and Technology

Working in
association
with



Tempted...

EASTRY COFFEE HOUSE

Fiveways, The Cross
CT13 0FZ

OPENING HOURS

Mon-Fri
08.30-16.30
Saturday
09.00-16.00

FREE WI-FI



Serving freshly ground coffee, beverages, sandwiches and a variety of savoury items and cakes.

Gluten, dairy and sugar free options available.

Take-away available.

+ Computer Problems?

No nonsense advice & prices

Advice - Upgrades - Repairs
Internet - Viruses - Networks
Home tuition - Firewalls

DJ Computer Services

In your home at a time convenient to you



Tel: 01304-331083

Mob: 07789-823602

E-mail: denis@djonesweb.co.uk

FINN'S

Town & Country properties since 1865

1 King Street, Sandwich

01304 612147

www.finns.co.uk



The Cross, Lower Street, Eastry,
Kent CT13 0HX
Tel : 01304 611188
thefivebellseastry@yahoo.co.uk
www.thefivebellseastry.com

A Traditional Old English Village Pub
with a lot to offer



Food served daily 12noon - 8.30pm
Sunday Roasts and children's menu

Bed & Breakfast Rooms Available

Private Function Room available for parties,
conferences, meetings and celebrations.



The Five Bells Eastry



@fivebellseastry

Redgrove Services Man & Van



Light Haulage
Collections/Deliveries
Student/Flat Moves
General Man + Van
Short & Long Distance

07858475009
redgroveservices@gmail.com

Redgrove Services Garden Maintenance

Hedge Trimming Lawn Mowing Weeding

Garden Clearance General Maintenance

No job too small

07840139577
redgroveservices@gmail.com



R.B.W

KENT'S WATER FEATURE SPECIALISTS AND POND BUILDING EXPERTS

Garden/ Pond Design, Building & Refurbishments, Pond Cleaning
Maintenance / Maintenance Contracts, Child Safe Pond Covers
Filtration Specialists
Patios - Decking - Fencing - Brickwork - Arbours

Tel: 07563212858




FREE ESTIMATES and CONSULTATIONS

www.ReflectionByWater.com

Email: andrewlongrbw@hotmail.com



Anypa Dog Grooming

-  One to one Service
-  Full Groom or bath Only
-  Clipping to Breed Standard or Pet Trim
-  Handstripping
-  Full Health Check with every Groom
-  Nail Cutting
-  Fully Insured
-  City & Guilds Qualified
-  Based in Eastry
-  Please Phone, Email or Text for a **FREE** Consultation / Appointment

Mob: 07930278107

Email: dawn.fenton@sky.com

The Whistling Gardener

*Experienced Eastry gardener with a
passion for wildlife, ponds and plants*

**Garden maintenance,
makeover and design
incl pergolas**

**Specialist in
Pond Installation & Upkeep**

No Job too Small

Simon Dundas
Eastry 611320



for photos, experience etc see

TheWhistlingGardener.co.uk



EASTRY CHIROPODY

Pound House, St. Mary's Close, CT13 0HP

For an appointment please ring

01304 611687

07870 385 984

Mrs Zsuzsanna Snarey

www.eastry-chiroprody.co.uk

HCPC Registered Qualified Surgical Chiroprapist
Registered Member of the British Chiroprody &
Podiatry Association

Sentinel Care

*Specialists in 24 hour
live-in Care*

Sentinel Care is a private care agency dedicated to caring for the elderly, sick and disabled. We provide a continuous residential rota service, enabling clients to be cared for in the comfort of their own homes, with live-in carers

**For further details and
brochure phone:-
01797 361744**

Mr R Crick

Drainage • Driveways
Excavations • Earthworks
Hard Landscaping • Concreting
Footings • Septic Tanks
Tarmac • Block Paving
Fencing • Garden Services

30 years experience, Fully insured
CITB Reg

Friendly Reliable Service

Recommendations available

Free estimates

Specialist digger drivers available

Please call 01304 619442 or
07771 701594

Reuben.crick@sky.com

Need reliable childcare for your 2 to
11 year olds?

From 7.30am-6pm weekdays for
50 weeks a year for 2-11 yr olds, take to &
collect from local schools*, provide healthy
meals in our Breakfast, Pre-school,
After school & Holiday clubs

We're Ofsted & KCC registered childcare, claim
your FREE place for 3-4 year olds and up to
80% back if you're claiming tax credits!

Wrap Around Care and Snug Bugs Nursery

is independently run within the grounds of
Northbourne CEP School. CT14 0LP

*For more info & to arrange a visit. call
Gill on 01304 613753

YOUR LOCAL PRINTER

Over 25 years working in and for local
East Kent communities

design | web | print



HAYWARD
DESIGN & PRINT

3-4 Builders Square, Littlebourne, Canterbury, Kent CT3 1XU
T. 01227 721 864 W. hayward-design.co.uk

COMPUTER PROBLEMS?

PC engineer with 25 years experience

Tel (01304) 832419

Setup, Repairs

Internet issues

System Tidy-up

Virus removal

Video / Camcorder Tapes

to DVD from £4.75 M: 07910 975248

email: motionflyerpictures@gmail.com

www.ruralrepairs.com

SEWING & ALTERATIONS

Seamstress with 30 years experience

Tel (01304) 832419 M: 07948 188491

Shortening & Taking in

Zip replacement

Lining replacement

Evening & Bridal wear

Curtain Alterations

email: ruralsewing@gmail.com



Eastry Fish Bar

1 The Cross Eastry CT13 0FZ



Opening times:

Tues. Wed. Thurs 4.30-9.30pm

Fri 11.30-1.30 4.30-9.30pm

Sat 11.30-1.30 4.30-9.30pm

CLOSED SUNDAY & MONDAY

eastryfishbar@btconnect.com

01304 614373

We accept credit and debit cards

General Handyman

Friendly and reliable service. No job too small.
General home and garden repairs and maintenance including non-Part P
electrical work.
Small construction projects undertaken.

[www.facebook.com/ Jonathan Russell - Handyman](http://www.facebook.com/JonathanRussell-Handyman)

Jonathan Russell
07802 251823

Your local, reliable **ELECTRICIANS**

- ☑ Free quotations
- ☑ Alterations to existing electrics
- ☑ Fault finding, testing and inspections
- ☑ Garage / shed / garden electrics
- ☑ Hot tub electrical supplies
- ☑ Wired smoke alarms
- ☑ Electric car charging points
- ☑ All domestic electrical work - *no job too small!*



PAH

P.A.Hollingworth & Co
Electrical Contractors



☑ Tel: 01304 611967 ☎ Email: electricians@pahollingworth.co.uk



- Domestic & Commercial Cleaners
- Friendly, Reliable Teams

- Weekly/ Fortnightly/ Monthly Cleans - To Suit You
- End of Tenancy Cleans
- Deep Cleans
- All Cleaning Materials and Equipment Provided
- Fully Insured
- Professional, Uniformed Staff Trained to NVQ2 Standards



Call us today for a Top Class Clean

Office: 01304 275086

Mobile: 07542 624402

apexcleanltd@gmail.com

www.apexclean.uk

River Chimney Sweep

- Insurance Approved
- Certificates Issued
- Smoke Test Included
- Vacuum Clean & Tidy
- Multi-fuel stoves
- Open grates
- All wood burning stoves
- Inglenooks
- Aga/ Rayburns
- Gas fire flues

Sweeps from £35

Call Marcus Wright:

Tel: 01304 761081

Mob: 07971 699220

www.riverchimneysweep.co.uk

Riverchimneysweep@live.co.uk

We also undertake:
Chimney Re-pointing &
Chimney Maintenance



Follow us:  

NIGEL BROWN and SON

**PLUMBING & HEATING ENGINEERS
GAS SAFE REGISTERED INSTALLERS**

CENTRAL HEATING

**GAS INSTALLATIONS
GAS SERVICING
GAS HEATING REPAIRS AND
BOILER SERVICES**



**BATHROOMS SUPPLIED & FITTED
KITCHENS SUPPLIED AND FITTED
ALL GENERAL PLUMBING REPAIRS**

MOBILE 07774 228777

J.DILNOT SMITH & SON *Funeral Directors*

*A local independent family
concern providing a complete
and caring service*

PERSONAL ATTENTION



**PRIVATE CHAPELS OF
REST**



Beacon Lane
Day or Night Woodnesborough
Sandwich
01304 812300

WASH DAY BLUES!

Trouble with an appliance?

**We specialise in repairs to most makes of
WASHING MACHINE : DISHWASHER : TUMBLE DRYER**

FREE ESTIMATES

Established 42 years

THOMPSON SERVICES

01304 612020 * 07860335792

HOROLOGY REPAIRS

MR. T. PETTMAN

Clock Maker

SPECIALIST IN ANTIQUE CLOCK RESTORATION

Telephone: 07860 498963

Canine Design

Small to medium dog grooming
C&G qualified
30+ years experience
28 Peak Drive, Eastry
Please call Heidi 07521 766690



GARDEN MACHINERY REPAIRS **TREVOR LAKER ENGINEERING**

UNIT 17 BIRNAM MUSHROOMS, HAMMILL ROAD,
WOODNESBOROUGH, SANDWICH, CT13 0PR.

01304 813777

paul.laker3@btinternet.com

DELIVERY & COLLECTION SERVICE

GRAHAM KINNS DipFA

Are your pensions, and investments performing as you'd like?

Have they been reviewed in full within the last 12 months?

If the answer is NO we need to talk!



I will cover the cost of a full pension and/or investment review
for all Eastry residents

FOR A FREE **INDEPENDENT** REVIEW CALL ME ON **07740192505**

SIMON STAIT PROPERTY MAINTENANCE

From a Dripping Tap to a Leaky Roof I've got it Covered

For all your building and plumbing jobs inside and out

- Kitchens and Bathrooms installed
- Outside Taps, Radiators
- Roofing Guttering, Fascias and Soffits
- Sheds & Fencing erected
- Carpentry
- Laminate Floors
- Flatpacks assembled
- Painting and Decorating etc

Fully Insured, Reliable Craftsman

For Free Estimates and Consultations call Simon on 07727 687538

EASTRY PHARMACY LTD

HEALTH CARE FOR ALL THE FAMILY



www.eastryparmacyltd.co.uk

Comprehensive travel vaccination
Shingles vaccination
Flu vaccination on the NHS
Pneumonia vaccination
Smoking cessation
Weight management
Prescription collection and delivery service
Warfarin supply
Emergency contraception
Medication requirements for:
Erectile dysfunction and Malaria prophylaxis

We also provide a fully comprehensive repeat prescription scheme

NO LUNCHTIME CLOSING

HOURS OF SERVICE

Monday to Friday: 9.00am - 6.00pm

Saturday: 9.00am - 5.00pm

OPEN LUNCHTIMES

N.B. HAFEEZ MPS

Tel & fax: 01304 611362 email: eastry.fl902@nhs.net



Karen's Hairdressing Service

- Freelance unisex hairdresser
- Extensive knowledge of all Hairdressing and Barbering techniques
- Classic trends to most modern styles
- Perms, Colours, Cutting, Blow dries, Shampoo & sets, Up do's and Bridal Hair all at affordable prices
- Day and evening appointments available
- Call Karen on 07969790604

City & Guilds
Believe you can

TIDY CARPENTRY AND JOINERY



ALL ASPECTS OF CARPENTRY WORK UNDERTAKEN INCLUDING

JOINERY • DOORHANGING • FLOORING
WINDOWS • KITCHENS • REPAIRS
PAINTING (INTERIOR & EXTERIOR) • COVING
PROPERTY MAINTENANCE • PERGOLAS & DECKING
STAIR COMPONENTS • TIMBER STUD PARTITIONS
RE-POINTING BRICKWORK
CERAMIC FLOOR & WALL TILING • PLASTERBOARDING



LEE TIDY: 01304 617537

MOBILE: 07742683880

E-MAIL: leetidycarpentry@gmail.com

FREE ESTIMATES

Wright & Shadwell
FINANCIAL MANAGEMENT

- ✦ Investments & Savings
- ✦ Retirement Planning
- ✦ IHT & Succession Planning
- ✦ Pension Sharing on Divorce
- ✦ Family Protection
- ✦ Overall Holistic Advice

**Call now for a FREE
Financial Review and find out
how to make the most of your
Tax Free Savings**

Karen Wright

email info@wrightshadwell.co.uk



The Heathers
Elmstone, Preston
Nr Canterbury
Kent CT3 1HH
T **01227 722922**
F **01227 722905**

D J PLUMBING SERVICES

All aspects of plumbing undertaken

- Ball valves to bathrooms - Taps to tanks
- All work guaranteed
- Friendly & reliable
- No job is too small

Call Dave on: 01304 369961 or 07971 421766

djplumbing123@googlemail.com



City & Guilds qualified. Established 1992. Fully insured

Sandwich **ANIMAL FEEDS** Est. 1991

Sandwich Animal Feeds

Ash Road, Sandwich, CT13 9JA

Open 9 to 5.30 Mon to Sat
and 10 to 2pm Sunday

We are suppliers of feed for animals both large and small. From domestic and household pets to farm animals and much more besides. Our friendly knowledgeable staff are there to help.

- Farm feeds
- Domestic & household pets
- Horse feed
- Horse rugs & accessories
- Accessories for all animals
- Chicken coops, rabbit hutches and bird tables
- Wild bird food and treats
- Frontline and horse wormers
- Prescription diet for dogs and cats

**ANYTHING NOT STOCKED
CAN BE ORDERED!**

LARGE CAR PARK • www.sandwich-animal-feeds.co.uk • CARRY OUT SERVICE

01304 613402

•

07725 592077

BICKERS

Your local Shop, Newsagent and Post Office

Serving you with all you need:

- Your first stop for newspapers & magazines
- Wide range of confectionary
- Good selection of greeting cards & stationery
- Milk & essential groceries
- National Lottery
- Motor Vehicle Tax and Council Tax payments
- Foreign currency and travel insurance
- Banking facilities - no fee payable (Barclays/ Giro/ Co-op/ Lloyds TSB)
- Cash withdrawals (Mon-Sat only)

Now - Wines, beers and spirits!

Open 7 days a week: Monday to Friday 6:30am - 6pm

Saturday 7am - 6pm Sunday 7:30 - 12pm

Tel: 611258 (shop) 621864 (Post Office)

Batchelor Coop

Chartered Accountants

www.batchelorcoop.co.uk 01304 620600



"A professional accountancy service right on your doorstep"



Accounts	Personal Tax
Bookkeeping	Company Tax
Payroll	Tax Planning
VAT	Business Start-ups
Audit	

enquiries@batchelorcoop.co.uk

Foxborough Tyre Co



Servicing & Repairs

Carried out by
experienced mechanics



MOT

Petrol and Diesel -



Welding

Chassis and bodywork
welding to MOT standard

Air Conditioning

Service and repair to
all makes of vehicle



All work fully guaranteed

Foxborough Hill, Eastry

TEL: 01304 621172