

KENT'S PLAN BEE



August 2021 Newsletter

August's Blogs – Butterflies and Bees

In July, we celebrated Bees Needs week and the Big Butterfly Count by showcasing some of the amazing species you can find in Kent. If you missed any of our butterfly identification tips, or ways to help Kent's bees, we have put it all into two handy blogs for you. Find them both on the Explore Kent website.

Bee Needs Blog: <https://explorekent.org/blog/2021/08/24/kent-a-hotspot-for-wild-bees/>

Butterfly ID Blog: <https://explorekent.org/blog/2021/08/23/kents-amazing-butterflies/>



Early Bumblebee



Marbled White butterfly

Summer Reading Challenge – Pollinator Week

Over the summer, children across Kent have been encouraged to take part in the Summer Reading Challenge, where they must read 6 books, eBooks, eAudio or eMagazines. Across the 9th -15th August, we helped Kent Libraries celebrate their Pollinators week by posting a range of reading related activities on our Facebook page. The Reading Challenge is still on until the 11th of September for those who need to complete their 6 books. If you are struggling to pick your last book, then see the titles suggested by Kent Libraries on their website:

https://kent.spydus.co.uk/cgi-bin/spydus.exe/MSGTRNGEN/WPAC/SUMMERREADINGCHALLENGE?HOMEPRMS=UD_READINGCHALLENGE

Other Pollinators

Sometimes we forget that there are other pollinators besides bees, butterflies, and moths. To raise awareness of these overlooked pollinators, we highlighted a few species of beetles, wasps, and flies on our Facebook page that you can find in Kent. Beetles and flies have been pollinating flowers long before bees and butterflies evolved, and although wasps have a bad reputation, the majority are important pollinators. We have added a few to our "What to look out for in September" list below but check out our Facebook page for more species and details.



What to look out for in September

Fisher's Estuarine Moth



Image credit: Peter Maton

This rare, European Protected Species has a stronghold in Kent and is one of the few places in the UK it is located. Fisher's Estuarine moth can be found on coastal habitats where there is plenty of coarse grass.

Appearing in autumn, the adult moth is seen circling Hog's Fennel, where it will lay its eggs and the caterpillars will feed on the roots until emerging the following autumn.

Want to see these moths for yourself? Kent's Magnificent Moth Project will be holding a walk in late September to visit one of the moth sites. Follow their Facebook page for the event details and other Kent moth and butterfly updates:

<https://www.facebook.com/ButterflyConservationKent>

Social Wasps in Autumn



German Wasp

Coming to the end of summer means coming to the end of the brood season for social wasps. During the summer, worker wasps caught prey for the developing larvae to eat, and drank the sugary secretion produced by the larvae.

Now the larvae have grown and left the nest, the workers are out looking for more sugary snacks, like nectar and rotting fruit. Whilst collecting nectar, they now play the important part of pollinating late flowering plants.

Learn how to tell the difference between Common and German Wasps with our cheat sheet available on our Facebook:

<https://www.facebook.com/KentsPlanBee/photos/a.107187048198490/161749399408921>

Second-brood Butterflies



Red Admiral

A lot of butterflies have been able to quickly reproduce this year and the butterflies you see this month come from eggs laid back in the spring. The purpose of these butterflies now is to produce offspring that will overwinter to become next spring's butterflies. Here are some species you may see on a warmer day this September:

- Holly Blue
- Red Admiral
- Comma

As we come to the end of the season, you may notice that their wings are looking a little ragged and tired. This usually does not stop them from flying.

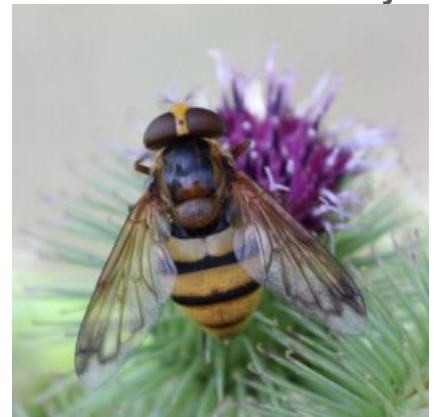
Ivy Mining Bee



Rose Chafer



Hornet Mimic Hoverfly



Your Pollinator Photos

Since our last newsletter, you've been sending us some of your pollinator pictures. This month we have been sent a lovely picture of bumblebees on an Angelica plant by Steve Corbett. Anne McGregor has also sent us some photos of a Six Spot Burnet moth on Hemp Agrimony, plus a Passionflower which the bees and hoverflies love. There are also lots more submitted on our Facebook Page, go to the "Community" tab to see them all.



Bumblebees on Angelica



Six Spot Burnet moth on Hemp Agrimony



Bees on a Passionflower

We love to see your finds and are always looking for more photos to use in our Newsletters and on our Facebook page. If you would like to see your photos of pollinators featured, why not email us your pictures at planbee@kent.gov.uk or post them on our Facebook page directly.

Newsletter Back Issues

If you have missed any of the previous editions of the Newsletter, they have now all been added to our webpage. You can download them as PDFs or share the website address on your social media. Find all the Newsletters on the Pollinators section of Kent County Council website, or follow this link:

<https://www.kent.gov.uk/environment-waste-and-planning/nature-and-biodiversity/pollinators/kents-plan-bee-pollinator-action-plan/kents-plan-bee-newsletter>

Keep up to date with the latest news via our Facebook page.

<https://www.facebook.com/KentsPlanBee>



If you received this email indirectly and would like to subscribe to our mailing list, please email us on the address below with the subject line "Sign Up". If you wish to unsubscribe from this mailing list, please email us on the address below with the subject line "Unsubscribe".

Do you have a Kent pollinator news story or event that you would like featured in our newsletter? Email it to the address below and we will be in contact about a potential space in the Newsletter.

planbee@kent.gov.uk

Edited by Hannah Simmons, Graduate Biodiversity Officer, Kent County Council.

For a Pollinator Friendly Garden of England

